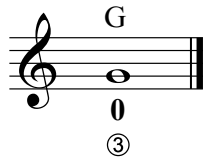
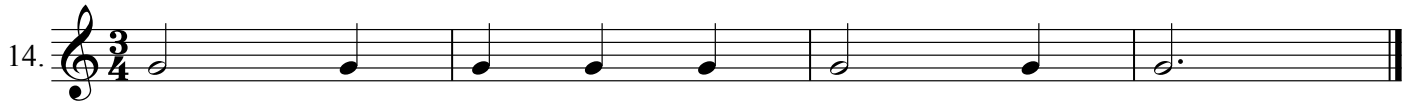


Guitar Reader

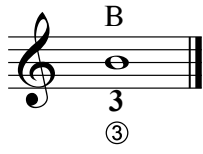
René Schols



Foolin' 'Round with G



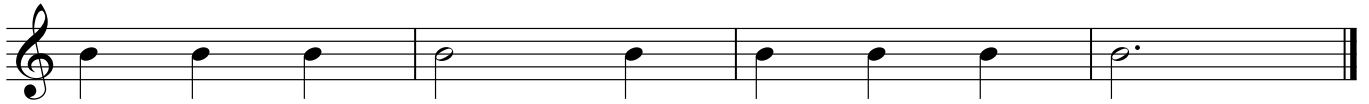
Better B Nice!



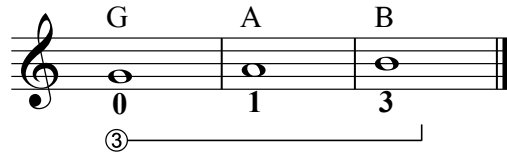
Musical notation for a B note on a treble clef staff. The note is a half note. Below the staff, the number '3' is written, with a circled '3' underneath it, indicating a triplet fingerings.

19. 

Musical notation for the first line of music for exercise 19. It is in 3/4 time and consists of four measures of music.



Musical notation for the second line of music for exercise 19. It is in 3/4 time and consists of four measures of music.



Musical notation for a triplet of notes G, A, and B on a treble clef staff. The notes are G (0), A (1), and B (3). A circled '3' is written below the staff with a bracket underneath it, indicating a triplet.

20. 

Musical notation for the first line of music for exercise 20. It is in 3/4 time and consists of five measures of music.

Un and Down

21. Musical notation for 'Un and Down' in 4/4 time. The first staff has a treble clef and a key signature of one sharp (F#). The melody consists of quarter notes: G4, A4, B4, C5, B4, A4, G4, F#4, E4, D4. The second staff has a treble clef and a key signature of one sharp. The melody consists of quarter notes: B3, A3, G3, F#3, E3, D3, C3, B2, A2, G2. Chord symbols are placed above the notes: G, Em, Am, D7, G, D7, G in the first staff; Bm, Am, D7, G, D7, G in the second staff.

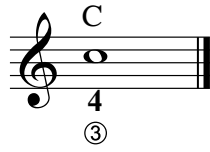
One, Two, Three

22. Musical notation for 'One, Two, Three' in 3/4 time. The first staff has a treble clef and a key signature of one sharp (F#). The melody consists of quarter notes: G4, A4, B4, C5, B4, A4, G4, F#4, E4, D4. The second staff has a treble clef and a key signature of one sharp. The melody consists of quarter notes: B3, A3, G3, F#3, E3, D3, C3, B2, A2, G2.

Dancing

23. Musical notation for 'Dancing' in 3/4 time. The first staff has a treble clef and a key signature of one sharp (F#). The melody consists of quarter notes: G4, A4, B4, C5, B4, A4, G4, F#4, E4, D4. The second staff has a treble clef and a key signature of one sharp. The melody consists of quarter notes: B3, A3, G3, F#3, E3, D3, C3, B2, A2, G2.

C U Baby!



26.

Spring Waltz

27.

My Turn

28.

Old Man

29.

Sad Song

6

30.

Musical notation for measures 30 and 31. The key signature has one flat (B-flat), and the time signature is 3/4. Measure 30 contains four measures of music: a quarter note G4, a quarter note A4, a quarter note Bb4, and a half note G4. Measure 31 contains four measures of music: a quarter note A4, a quarter note Bb4, a quarter note C5, and a half note Bb4. The piece concludes with a double bar line.

Au Quai!

31.

Musical notation for measures 31 and 32. The key signature has one flat (B-flat), and the time signature is 4/4. Measure 31 contains four measures of music with chords C, F, C, and G above the notes. Measure 32 contains four measures of music with chords C, F, G, and C above the notes. The piece concludes with a double bar line.